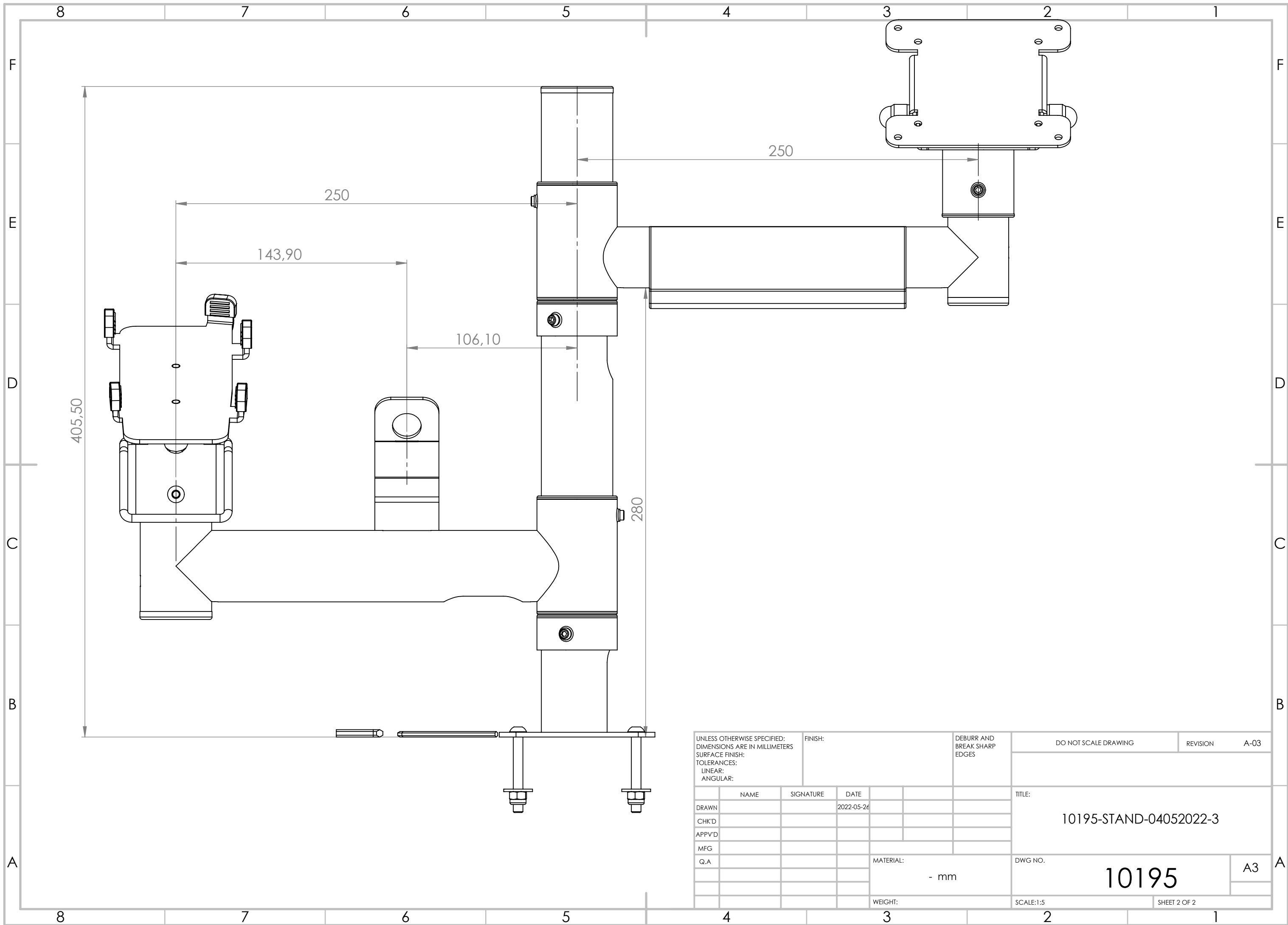


ITEM NO.	PART NUMBER	DESCRIPTION	QTY.
1	00676-ADAPT-SCR-D44.5-L35-d28-GAM-P		1
2	10251-PAST_STOV-44.5-400-DAZ		1
3	3579-01200-HAND-PIN-FIX-SUR 250	Hand for transaction terminal holders 250 mm length	1
4	02051-WIRE-HOLDER-L160		1
5	3815-06301-VESA-REINF-H-PIN-SUR	Vesa 75/100 heavy duty holder for terminal holder hand	1
6	10201-HAND-PIN-FIX-CASH-250-3HOLES-SUR	Hand for transaction terminal holders and cash plate 250 mm length	1
7	10202-IPP350-44.5m-SUR		1
8	2263-DIN911 SW 4	Key for ISO 7380 M6x50	1
9	3065-KEY-DIN911-SW3-ZN	Key for DIN 916 M6x6	1
10	Washer DIN 9021 - 6.4		2
11	DIN 985 - M6 - N	DIN 985 - M6 - N	2
12	ISO 7380 - M6 x 50 - 50N		2
13	3722-03985-FIX-RING-SUR	Height fixing ring	2

UNLESS OTHERWISE SPECIFIED: DIMENSIONS ARE IN MILLIMETERS SURFACE FINISH: TOLERANCES: LINEAR: ANGULAR:		FINISH:	DEBURR AND BREAK SHARP EDGES	DO NOT SCALE DRAWING	REVISION	A-03
NAME	SIGNATURE	DATE	TITLE:			
DRAWN		2022-05-26	10195-STAND-04052022-3			
CHK'D						
APPV'D						
MFG						
Q.A			MATERIAL:	DWG NO.	A3	
			- mm	10195		
			WEIGHT:	SCALE:1:5	SHEET 1 OF 2	



UNLESS OTHERWISE SPECIFIED: DIMENSIONS ARE IN MILLIMETERS SURFACE FINISH: TOLERANCES: LINEAR: ANGULAR:			FINISH:		DEBURR AND BREAK SHARP EDGES		DO NOT SCALE DRAWING		REVISION		A-03	
											TITLE:	
											10195-STAND-04052022-3	
											DWG NO.	
											10195	
											A3	
											SCALE:1:5	
											SHEET 2 OF 2	